

T90-2,5



Ratio
Rapporto / Verhältnis
1:1



RPM
Velocità / Drehzahl max.
6.000 min⁻¹



Max. axial load
Max. carico assiale / Max. Axialbelastung
510 N



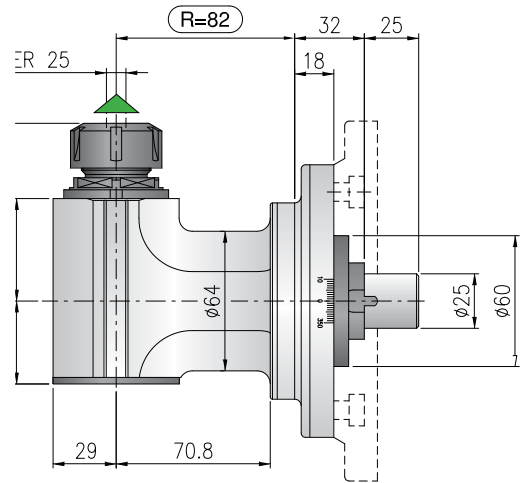
Torque
Momento torcente / Drehmoment
30 Nm



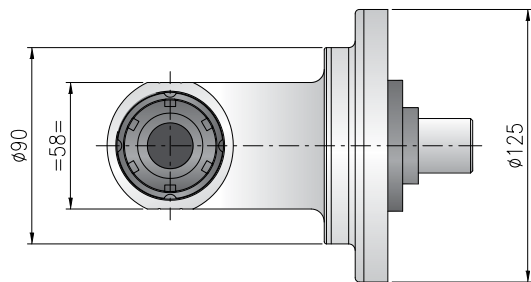
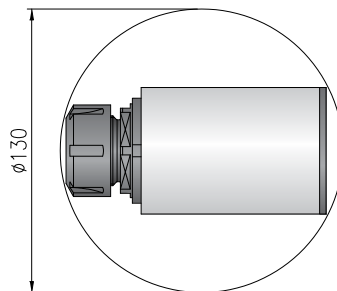
Weight
Peso / Gewicht
5,4 kg



Collet
Pinza / Spannzange
ER-25 Ø 1/16 mm



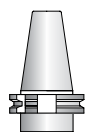
Minimum diameter without tool
Diametro minimo senza utensile
Durchmesser min. ohne Werkzeug



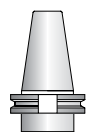
*** STANDARD EQUIPMENT INCLUDES:**

- Special bag - wrenches - Grease tube - Instruction book
- Bauletto - Ghiera ER chiavi di servizio - Tubetto di grasso - Libro istruzioni
- Spezialtasche - Schraubenschlüssel - Tube mit Fett - Bedienungsanleitung

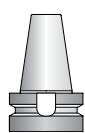
Direction of rotation same as machine spindle / senso di rotazione uguale al mandrino / Drehrichtung gleich wie Antriebsspindel



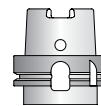
DIN-69871



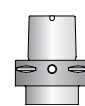
CAT



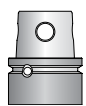
MAS-BT



HSK



CAPTO



KM

Shank/Cono/Aufnahme

Option / Opzione / Option



bar max
12

Coolant through spindle
Adduzione refrigerante interna
Kühlmittelzufuhr durch Spindel



min⁻¹
8.000

High speed RPM max.
Alta velocità RPM max.
Drehzahl max.



Ø mm
16

Arbor output
Porta fresa
Fräseraufnahme



Ø mm max.
16

Welding output
Welding
Welding-Aufnahme



HSK-32

Quick Change
Attacco rapido
Schnellwechselfaufnahme



ER-25/ER-16

Double output
Doppia uscita
Doppelter Ausgang